



# Medic to Medic



# Annual Report & Financial Statement

July 1<sup>st</sup> 2023 – June 30<sup>th</sup> 2024



# Contents

---

What does Medic to Medic do? .....	2
Charity History .....	3
Mission Statement .....	4
Report from Chief Executive Officer .....	5
Medical Observerships .....	7
Where does Medic to Medic work .....	8
2023 – 2024 in numbers .....	9
Meet the Team UK & NZ .....	12
Meet the Team Malawi .....	14
School Talks .....	15
Our Alumni community – where are they now? .....	17
Hurst Essay Winners. ....	20
Environmental Action Group .....	21
Statement of Financial Activities UK .....	23
Balance Sheet UK .....	24
Statement of Financial Activities NZ .....	27
Administrative Details .....	29



# What does Medic to Medic do?

**The aim of Medic to Medic is to support healthcare students in low-income countries who are at risk of dropping out of their training. With our support, students can focus on their studies until graduation, and countries gain the expertise of health professionals who are so desperately needed.**

Medic to Medic works like “sponsor a child” schemes – except we sponsor healthcare students. Each donor is linked to an individual student, who sends updates on his or her progress. Donations are pooled so that even if a donor withdraws, no student is disadvantaged.

We support students training to become doctors, pharmacists, physiotherapists, nurse midwives, mental health workers, clinical officers and optometrists in their home countries. Scholarships cover each student’s tuition fees, and other necessary allowances, as well as providing them with medical equipment, a laptop and textbooks, so that they have everything they need to successfully qualify from their courses. As of June 30<sup>th</sup> 2024 we were supporting 96 students, across 19 colleges, across 5 countries.

Without the support of Medic to Medic, many of these healthcare students would spend their spare time trying to find extra funding rather than focusing on their studies. With a scholarship, students can concentrate on their studies and they are more likely to stay and work in their home country following graduation, which is of great importance to the sustainability and development of their countries’ fragile health systems.

## 4 priorities

### *Health Workers*

We support trainee healthcare workers throughout their education, so that they can perform to the best of their ability. We want to add to the absolute numbers of health workers in training so that there are more graduates in countries with critical shortages.

### *Equity and Access*

We target those who are under represented in the health professions, such as women or those from rural areas. We want to increase the numbers of health workers working in rural areas, so that everyone has equal access to healthcare.

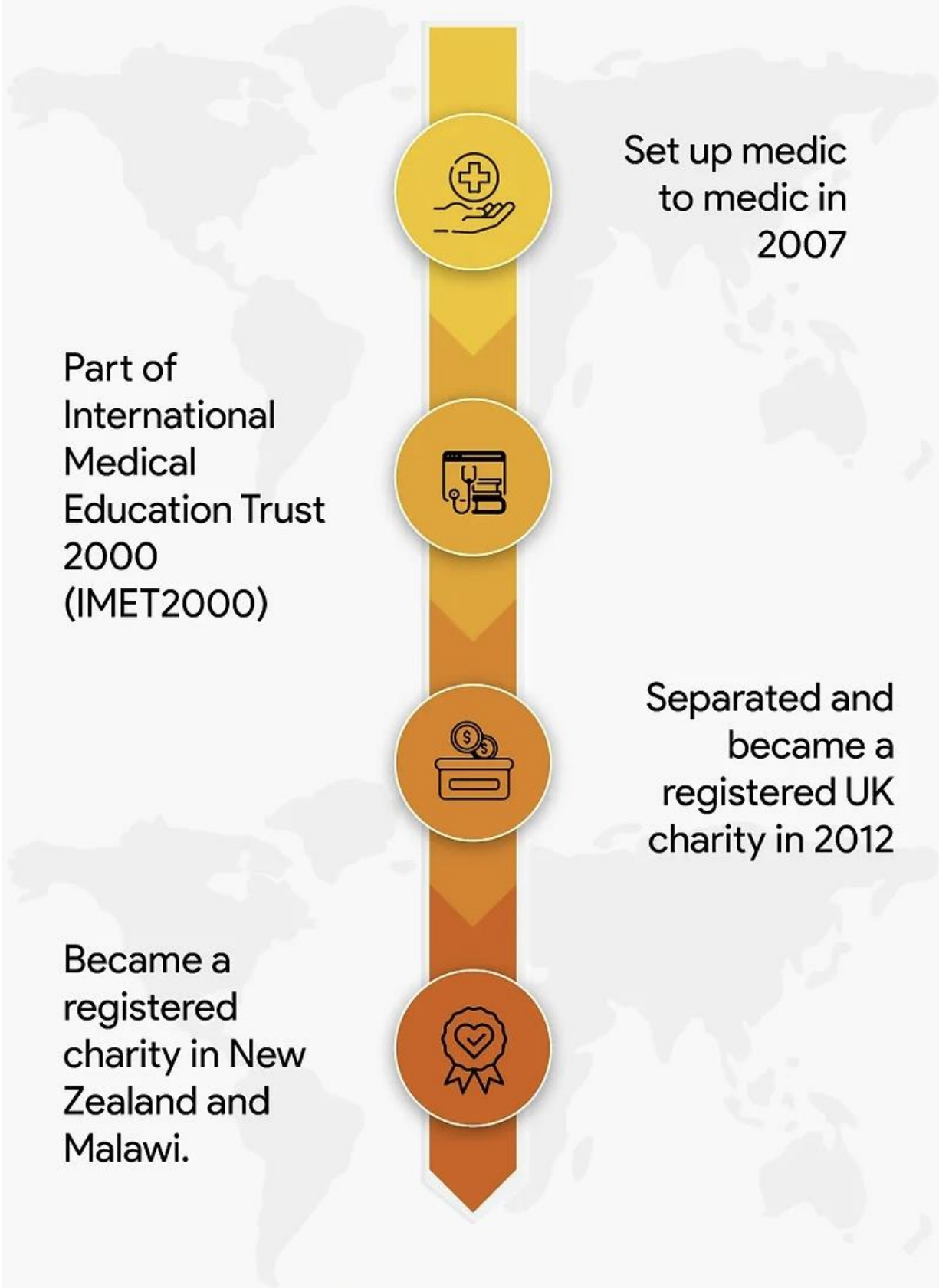
### *Awareness*

We hope to raise awareness of the different conditions facing health professionals worldwide and an appreciation of the global health community.

### *Leadership Skills*

We support our student community to gain leadership and empowerment skills through small scale, locally led projects related to health and wellbeing.

# CHARITY HISTORY



Set up medic to medic in 2007

Part of International Medical Education Trust 2000 (IMET2000)

Separated and became a registered UK charity in 2012

Became a registered charity in New Zealand and Malawi.

# Mission Statement

---

Medic to Medic believes that access to healthcare is a human right but is unequal both between and within nation states. Shortage of trained healthcare professionals is a major driver of such inequalities. We strive to address this issue by supporting healthcare students in Africa and low- and middle-income countries who can no longer afford to continue their studies. We value gender equality and seek to support women who are under represented in the healthcare professions. We seek to support students from disadvantaged backgrounds.





# Report from Chief Executive Officer

---

During 1<sup>st</sup> July 2023 – 30<sup>th</sup> June 2024, Medic to Medic supported a total of 83 individuals, across 12 colleges in Malawi and a further 13 students within Africa, bringing the total number of students supported to 96. This year saw the expansion of our scholarship support to include a new cohort of students from the Bachelor of Dental Surgery (BDS) programme at Kamuzu University of Health Sciences.

Our student community in Malawi included 10 dental students, 7 medical students, 4 nursing students, 2 physiotherapy students, 1 pharmacy student, and 1 palliative care nurse, training at the Kamuzu University of Health Sciences; 7 nursing students and 8 optometry students training at Mzuzu University; 4 clinical officers and 1 registered nursing student training at Ekwendeni College of Health Sciences; 9 students training at St John of God College – 2 in the diploma of psychosocial counselling, 6 in clinical medicine/psychiatric nursing and 1 in certificate of clinical medicine; 3 radiographer students, 2 optometry technicians, 1 pharmacy technicians, 1 dental therapy student and 1 environmental health student training at the Malawi College of Health Sciences; 11 students training as nurse midwife technicians with 7 students at Trinity nursing college, 2 students at St Johns Institute for health, and 1 each at Nkhoma and Mulanje Mission Colleges. Three additional students training with a certificate in clinical medicine (2) and a certificate in pharmacy (1) at St Johns Institute for health. One student training in biomedical engineering at the Malawi University of Business & Applied Science (formally known as the Polytechnic); two audiology students at the African Bible College; and one student studying respectively in BSc medical imaging, BSc medical microbiology and BSc immunology at Malawi University of Science and Technology.

Our students outside of Malawi included 1 postgraduate student completing the Master of

Paediatrics in Ethiopia; 1 dentist training at the University of Nairobi; 3 medical students in Uganda (2 at Mbarara University of Science & Technology and 1 student at Kampala International University Western Campus); 5 medical students in Zambia (3 at Eden University, and 1 each at University of Zambia and University of Lusaka); 2 pharmacy students at Eden University and 1 student training in Environmental Health at Levy Mwanawasa Medical University. 34 of our community graduated, bringing our total alumni to 230 graduates. We are currently in the process of analysing this year's graduate survey and will be releasing these results in due course. As our alumni community grows, the graduate survey becomes more complex to coordinate and will likely change to a 18 – 24 month cycle.

This year saw a significant step forward in our elective programme, which is an opportunity for us to fundraise sustainably in partnership with our Malawian community. We have partnered with 5 hospitals in Malawi (Zomba Central Hospital, Mwaiwathu Private Hospital and three Christian Health Association of Malawi (CHAM) hospitals (St Peter's Hospital on Likoma Island, Trinity Hospital in Nsanje and St Johns in Mzuzu)) to be able to offer a range of experiences to international medical students wishing to undertake their electives in a low resource setting. Through the elective fee we are able to provide a scholarship to 1 Malawian student for 1 year. Therefore the more medical students come on electives with us, the more scholarships we can provide to trainee health workers in Malawi.

Many elective students end up working alongside our graduate alumni in the facilities where they are placed and have the opportunity to meet members of our student



# Report from Chief Executive Officer

---

community. They are able to understand the important role of scholarships in bridging the gap to accessing medical education for many students from poor backgrounds and the impact of our organisation on the ground. They are also able to develop a greater appreciation for the complex dynamics associated with NGOs in the international development space.

Each medical student who comes on an elective in Malawi is strongly encouraged through our support and guidance to undertake an elective project and additional fundraising for their location site. Projects this year have ranged from undertaking an audit of existing health facilities and semi-structured interviews with health workers to providing period poverty packs to 300 young girls at schools on Likoma Island. International medical students are able to develop project management skills which will be useful to reflect upon during interviews with humanitarian organisations that they may apply to work with in the future as qualified doctors. These small scale projects have been hugely impactful, bringing in an additional 10 million Malawi Kwacha which has all been spent locally. We look forward to working on the ground with more of our hospital partners to develop projects for future elective students.

As part of our elective programme, international medical students are given the opportunity to have between 4-6 Chichewa language lessons over Zoom before they arrive. They are matched to one of our students who has volunteered to be a tutor. The student tutor is given an additional stipend for their time. Each lesson is recorded and uploaded to YouTube on an unlisted link so that the lessons can be revised at a later time. Additionally, our graduates host tropical medicine tutorials ahead of time, to give students preparation in key diseases and conditions that they will encounter which they have unlikely to have faced during their training to date, namely

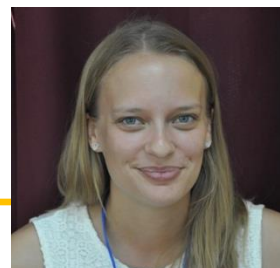
malaria, HIV, TB, neglected tropical diseases, common childhood presentations, malnutrition, obstetric emergencies, surgery in Malawi, dermatology in the tropics and a session on medical ethics for elective students. This pre-departure preparation enables us to prepare elective students before they arrive so that they have had cultural preparation and readiness.

So far we have had 9 students through our medical elective programme and look forward to hosting more students in the year ahead. With the elective fundraising we have so far been able to sponsor 1 new student at Trinity College of Nursing and undertake training for 28 graduates to become mentors for all of our student community which has enabled us to increase our holistic supports to our students by providing peer mentors.

We look forward to the year ahead as our elective programme and in country fundraising continues to develop in Malawi. We hope to launch our Walani helpline in the coming year. It has continued to be delayed due to financial constraints. We hope you are encouraged by the progress we have made and will continue to support us as we venture in to the future supporting the next generation of health workers where they are needed most.



Dr Tamsin Lillie  
MBBS MPH DTM&H EMC DCH  
DOMG FRNZCUC  
Chief Executive Officer



# Clinical Observerships in Malawi

Are you an A-Level student planning to work in the health sector?

## 2025 Trip dates include:

Friday 11<sup>th</sup> April – Sunday 27<sup>th</sup> April  
Friday 18<sup>th</sup> July – Sunday 3<sup>rd</sup> August  
Friday 1<sup>st</sup> August – Sunday 17<sup>th</sup> August



**2 week all inclusive trip**  
(flights, accommodation, meals, in country transfers, safari & lake Malawi activities, carbon offsetting) fully supervised by experienced group leaders **£3000**



## Activities

2x bedside teaching sessions  
Medical classroom teaching  
2x school visits to learn first aid



**To Apply**

[info@medictomedic.org.uk](mailto:info@medictomedic.org.uk)  
WhatsApp +265 (0)98 134 5409

Medic to Medic  
UK Registered Charity 1149904  
[www.medictomedic.org.uk](http://www.medictomedic.org.uk)

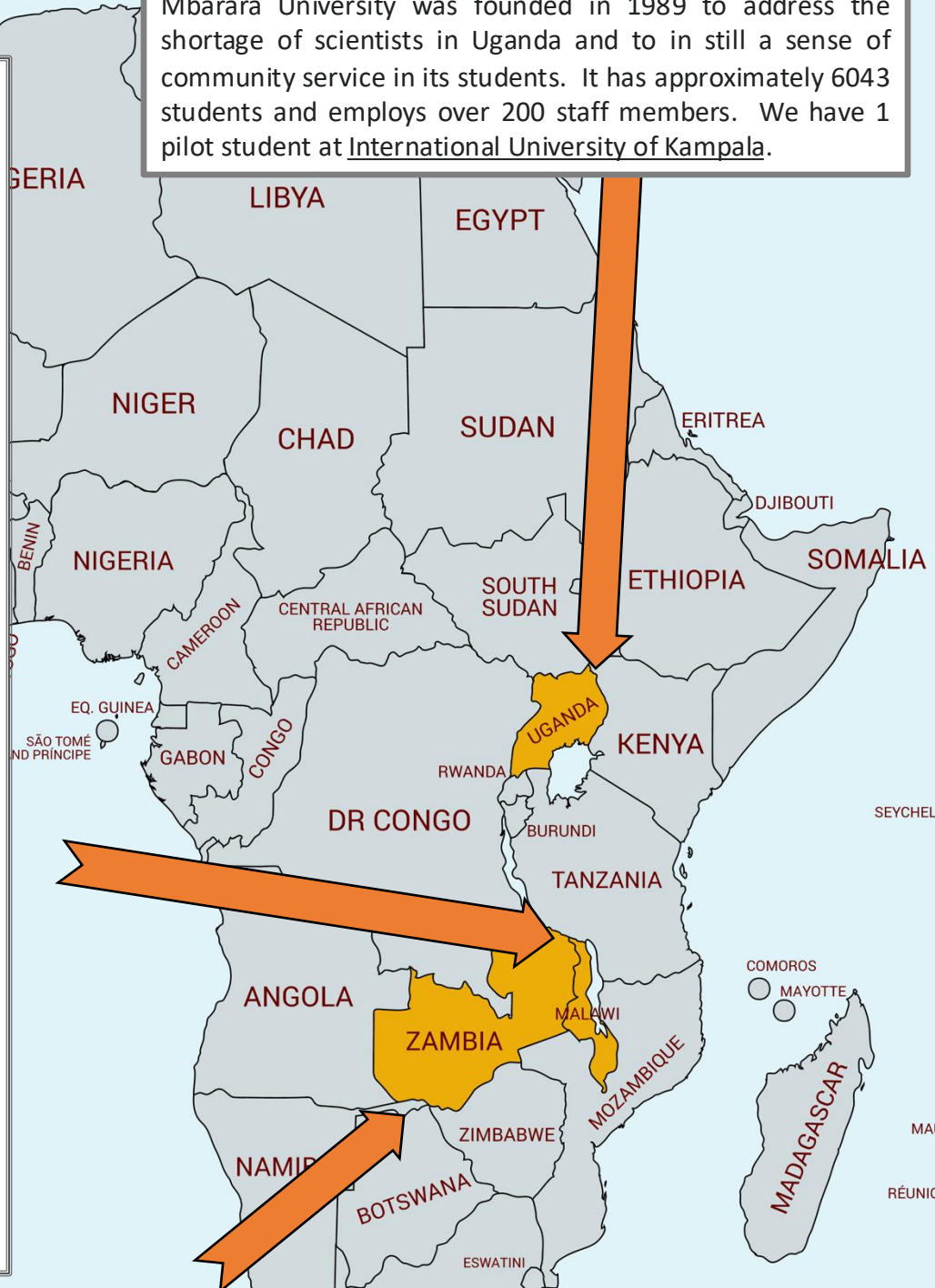


# Where does Medic to Medic work?

Additionally, we have a pilot student at the University of Nairobi and one postgraduate student in Ethiopia being sponsored by a restricted donation.

**MALAWI** – Kamuzu University of Health Sciences (KUHS) in Blantyre was set up in 1991. Initially a medical school, it now trains a range of health professionals in Blantyre, Lilongwe, and Mangochi campuses. Mzuzu University opened its nursing faculty in 2006. Students undertake clinical placements in the more rural northern region of Malawi, and their training is centred on the health needs of the local population. St John of God College, also in the north of Malawi, provides a unique training course for clinical officers (a type of health professional common in sub-Saharan Africa who do basic medical training) specialising in the provision of psychiatric care to the rural population. Ekwendeni College of Health Sciences trains students in a diploma of clinical medicine. Students graduate as clinical officers and run missionary hospitals and clinics in rural areas where there are no doctors. We continue to partner with Malawi College of Health Sciences, Mulanje Mission College, St Johns Institute of Nursing, Trinity Nursing College, Malawi University of Science & Technology, Nkhoma Nursing College, Malawi University of Business & Applied Science, and African Bible College.

**UGANDA** – Mbarara University of Science & Technology  
Mbarara University was founded in 1989 to address the shortage of scientists in Uganda and to instill a sense of community service in its students. It has approximately 6043 students and employs over 200 staff members. We have 1 pilot student at International University of Kampala.



**ZAMBIA** – The University of Zambia, based in Lusaka, is one of four government run institutions in Zambia that train doctors and other health professionals. It was established in 1965 and has as its motto "*Service and Excellence*". The medical school was the first in Zambia and is set opposite University Teaching Hospital, a tertiary referral hospital in Lusaka. We have 1 pilot student at Levy Mwanawasa Medical University in Lusaka. We are also supporting Malawian students to finish their studies at Eden University.

# 2023 – 2024 in Numbers

---

96 students supported

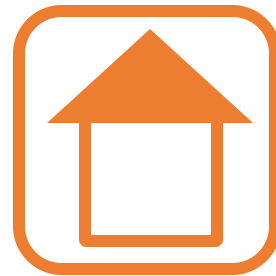


51%



49%

32 Graduations



19 Universities

14 laptops &  
tablets  
distributed



5 countries

20 Banana Boxes containing  
medical textbooks shipped





## **Peter Samuel**

**Nurse Midwife  
Technician**

**Nkhoma College of  
Nursing**

“Your financial and material support has made a significant difference in my life, and I am deeply grateful for your generosity. Your kindness and willingness to help during this time means more to me than words can express. Thank you so much for being there when I needed it most. Continue doing such generous work to other people who also need this kind of help. God bless you.”





medic to medic  
CONGOMA C1609/2022

# MALAWI MARATHON EVENT

Sunday 11th May 2025

5k, 10k or Full  
Marathon Options

Run through  
Thyolo Tea  
Estates in  
Southern Malawi

Local entries from  
**20,000MK**

For enquiries: [info@medictomedic.org.uk](mailto:info@medictomedic.org.uk)  
International 7 or 10 day inclusive  
packages available including safari  
and sightseeing trips.

Limited spaces available.

Raising funds for scholarships of trainee health workers



# Meet the Team UK & New Zealand

---



**Tamsin Lillie** *Chief Executive Officer, NZ Trustee*

Tamsin is an Urgent Care doctor working in Rotorua New Zealand with an interest in global health. She has been involved with Medic to Medic since 2009 having set up and run the Norwich medical school student branch. She has completed a Masters in International Public Health and the East African Diploma of Hygiene and Tropical Medicine. She has been CEO since January 2015.

**David Howells** *UK Trustee*

As a qualified accountant, Dave has spent his career in both the petrochemical & automotive industries. In the last phase of his career, he focused mainly on driving large digital transformations. Dave developed an interest and fascination with Africa while working in South Africa and now wants to help bring sustainable medical capability to Malawi.



**Sheena Jagjiwan** *Gift Aid Manager*

Sheena volunteers for Medic to Medic. She works full time at a Hospice charity in London. Sheena helps run the yearly monitoring visits in Malawi and submits our gift aid claim each year.



**Robin Schreiber** *UK Trustee*

Robin studied Pharmacy in Tübingen, Germany and graduated in 2019. In 2018 he received a scholarship from the German Academic Exchange Service (DAAD) to do a study about the availability and affordability of antimalarial drugs in comparison to antihypertensives in 24 primary health centres in Blantyre in Malawi. There he got to know Medic to Medic and has been an active supporter ever since.



**Bryony Hamel** *UK Trustee & Salisbury Recycles for Medic to Medic Coordinator*

Bryony first travelled to Malawi in 2010 to do her elective as a medical student. She was struck by the vast differences in healthcare provision in comparison to the NHS. She has been promoting the charity to anyone that will listen and runs the *Salisbury recycles for Medic to Medic* Terracycle collection point.



# Meet the Team UK & New Zealand

## **Liz Howard** *UK Trustee*

Liz is a GP and clinician for NHS Practitioner Health who lived in Malawi for 3 years. During this time, she became interested in the wellbeing of medical students, helping to set up a student peer support group as part of the College of Medicine's student wellbeing programme. She was touched by the students' stories; learning to deliver health care in a resource poor setting as well as dealing with considerable financial and family issues. Through this group she became aware of the amazing support Medic to Medic give and the real difference that it makes.



## **William Stones** *UK Trustee*

William Stones is a UK trained obstetrician-gynaecologist with global and public health interests. He has been affiliated with Kamuzu University of Health Sciences (formerly the College of Medicine) in Malawi since 2014. He currently lives and works in Nevis (Caribbean) and maintains online teaching and research links with Malawian university colleagues and postgraduate students.



## **Alice Namanja** *UK Volunteer Malawi Trustee*

Alice is a lecturer in Cardiorespiratory Physiotherapy at Kamuzu University of Health Sciences. After pursuing her Master of Science in Cardiovascular health and rehabilitation at the University of Chester, Alice is now doing her PhD studies in cardiac rehabilitation at the University of Hull in United Kingdom. Her focus is on primary and secondary prevention of cardiovascular disease among people living with HIV in Malawi. Her ambition is to establish approaches which could be used by Malawians living in both rural and urban settings to access and utilize the cardiovascular disease targeted preventive interventions such as exercise therapy, education, and counselling.



## **Melissa Brittle** *NZ Trustee*

Melissa is an Urgent Care Doctor working in Christchurch, New Zealand. Her interest in global health began when she was travelling in Asia in 2011. This led her to make a career change into medicine. While working in Myanmar with Yangon Medical school, she saw the additional challenges medical students face in countries where there is a lack of accessible funding. This can determine between those who can complete their studies and go on to contribute to the healthcare in their country and those who are unable to. She joined Medic to Medic to help address these inequalities in accessing medical education in other countries.



## **Anisha Palanivelu Viswanathan** *NZ Trustee*

Anisha is a doctor working at Hutt Hospital in Wellington. She first got involved with Medic to Medic as a 4th year medical student in Rotorua, helping sell masks as a fundraiser during the pandemic. Anisha has since been involved with raising awareness about Medic to Medic amongst medical students and junior doctors.



## **Sophie Rogers** *NZ Trustee*

Sophie is an accountant in Auckland and recently joined the NZ team as a trustee in early 2023. Having completed her bachelor's degree in accounting and commercial law in 2020, she has been completing her accounting qualifications with CPA Australia. Being the daughter of a nurse who has previously worked for a medical charity, Sophie has heard firsthand how greatly a community can benefit from the support of charities such as Medic to Medic.



# Meet the Team Malawi

## **Helen Dzumalala** *Blantyre Office Coordinator*

Helen runs the Medic to Medic Blantyre based office in New Naperi. She runs regular Malawi based initiatives including the medical textbook shop, student study space and the Blantyre guest bedroom. Prior to working for Medic to Medic she was secretary to the Dean of Students. In this role, she has been working alongside Medic to Medic since 2009.



## **Hawah Mbali** *Trustee*

Hawah is a Medical officer at Mzuzu Central Hospital, northern Malawi. She has worked with Medic to Medic since 2017 as a Medic to Medic representative in the northern region. She is currently studying Masters in Dermatology and Venereology at Regional Dermatology Center in Tanzania. She is passionate about dermatology and global health dermatology.

## **Fanuel Bickton** *Trustee*

Fanuel graduated as a physiotherapist in 2018. He completed a Masters of cardio-respiratory studies with distinction in 2022 from UCL. He is now based at the Malawi-Liverpool-Wellcome Programme and is a physiotherapy lecturer at the Kamuzu University of Health Sciences. He is also an Editor for the Malawi Medical Journal.

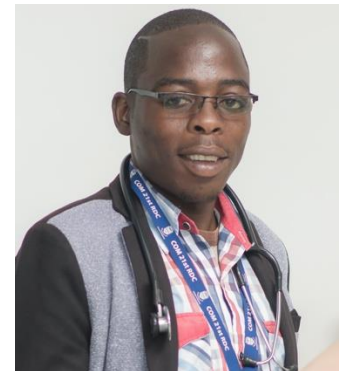


## **Thokozire Phiri-Makanjira** *Trustee*

Thokozire is a pharmacist, currently working in a retail pharmacy in Blantyre Limbe Malawi. She was a Medic to Medic beneficiary from 2015 to 2017. Now a trustee and a volunteer for the Malawi team. She is also volunteering with *iMind* youth organisation which focuses on mental health awareness to the youth in the country.

## **Jeremiah Kabaghe** *Trustee*

Jeremiah is a pharmacist and works as a retail pharmacist at Pharmacare in Blantyre. He volunteered to be part of the Malawi team and has been helpful in looking after students who have had welfare concerns. Additionally he has helped run health checks for fundraising in Blantyre.



Interested in being on the Medic to Medic team? We're always looking for more volunteers interested in fundraising, administration and grant writing. If you'd like to get involved, email us: [info@medictomedic.org.uk](mailto:info@medictomedic.org.uk)





# School Talks

*“Very worthwhile experience. We were the trail-blazers but overall it went well, we had a ton of fun, and found it very rewarding.” Elective Student 2024*

During 2023, we embarked on a new initiative – *“School Talks”*. The aim of this initiative is to:

- ✓ Encourage standard 7-8 learners in primary school and form 1-4 learners in secondary school to continue with education.
- ✓ Improve health literacy amongst these students; e.g. most students have heard of doctor and nurse, but what about the other health professionals, like optometrists, radiographers, physiotherapists & audiologists?
- ✓ Teach basic first aid skills, including CPR, recovery position and choking.

We do this by working with our existing **Medic to Medic** students in Malawi who give a motivational talk to the learners. Our students share their educational journey, encouraging students to think about their future, share the challenges which they experienced and how they overcame them. By giving students role models, we hope to inspire and encourage younger students to continue with education and consider health related courses in tertiary education. We’ve long since heard that students with a lack of role models can lose focus resulting in school dropouts and teenage pregnancies.

After the motivational talks we teach and demonstrate first aid skills. Our elective students visiting Malawi get involved in teaching these skills.

**These first aid skills may also help save a life!**

During the last 12 months, we reached **700** students at Nanchidwa primary school and Zomba secondary school.





# Global Gathering

---

On the 25<sup>th</sup> November 2023 we hosted our second online Global Gathering to share presentations from our students, graduates, colleges and trustees. Watch the recorded session via the YouTube link.

<https://www.youtube.com/watch?v=VrBUfdVvlZo>

Our guest speakers included:

- **Peter Samuel** - *Nurse Midwife Technician* at Nkhoma College of Nursing takes us through basic greetings in Chichewa at 5.26 minutes
- **Innocent Kwakwala** - *BSc Palliative Care Nurse* at Kamuzu University of Health Sciences tells us about his educational journey in Malawi at 14.29 minutes
- **Prosper Mtambo** - *Pharmacy Assistant graduate of 2022* talks about her educational journey at 36.28 minutes
- **Kennedy Gama** - *Dean of Students at Malawi College of Health Sciences*, talks to us about the problems facing students at this college at 1 hr 36 seconds
- **William Stones** - *Medic to Medic trustee* shares with us about his relationship with Malawi and his work in Global Health at 1 hr 21 minutes

Our Global Gathering takes place annually! Keep an eye out on our social media channels for times and dates.



2023 Global Gathering



**Listen to our Podcasts!**  
On Spotify: "Malawi Matters"  
<https://anchor.fm/medic-to-medic>



# Our alumni community – where are they now?

---

Each year we carry out an alumni survey to assess the long-term impact of undergraduate scholarship support in our community. At the time of data collection, we had a community of 229 graduates. Our 2024 graduate survey achieved a response rate of 99% with 2 graduates choosing not to fill in the survey.

*91% of Medic to Medic alumni remain in their country of training (Malawi & Uganda).*

Of those outside their country of training, 60% remain in sub-Saharan Africa with postgraduate training being the main reason for leaving. Overall, 3% of graduates are currently working in developed countries (Australia, UK, USA).

54% of graduates have a driving license, 36% of graduates own a car, and 10% of graduates own a house. 77% of graduates are providing school fees to children, with the number of children supported ranging from 1 to 5. These results show the long-term impacts and ripple effects of Medic to Medic scholarships.

*“Before I was a stressed person because there was no one back home to support me financially in my studies. I used to lack transport to go back to school after holidays. After Medic to Medic, I was a happy person. I never lacked transport anymore, I was feeding well in school, I got a laptop and other medical equipments. In general my life became softer.”*

*97% of graduates continue to reside in Africa with 88% of graduates currently employed.*

## Keep Updated!

Follow our blog to keep updated with our latest news and activities:  
<https://healthprofessionalmalawi.wordpress.com/>



# Community Voices

---

*“Life was so tough that I would even send part of my student allowance to my Mum so she survives. And I remember on the semesters I nearly failed to go to school until a friend who was from a well to do family offered to pay for my tuition. After second year, the tuition got raised that I could barely afford it's when Medic to Medic came to my rescue and am grateful for the experience.”*

*“My future was at stake like I had no hope that I will complete my education but coming in of Medic to Medic was a huge relief. I saw my future.”*

*“In short I would say that M2M was the secret ingredient – the bridge. Life before M2M was tough and hopeless. M2M dawned the future which my family and I are living now.”*

*“Before Medic to Medic I was saving monthly to pay for tuition. That meant I had to starve myself some part of the months in order to pay for school fees and other necessities.”*





“Thanks to  
Medic to  
Medic for  
making this  
dream  
become a  
reality. At first  
it was just a  
wish, but now  
it has  
happened.  
Thank you so  
much.”

**Takondwa Likumbo**  
BSc Nurse Midwife  
Mzuzu University





# Hurst Essay Winners

Every year Medic to Medic run the annual essay competition. This is a chance for the students to practise their essay writing skills as well as an extra opportunity to win some prize money. This year we ran two essay competitions; one for certificate and diploma level students and one for degree level students.

## This year's essay titles were:

### *Certificate & Diploma Entry*

“How can health facilities prepare for and respond to natural disasters?”

### *Degree Entry*

“Consider the role of the community in healthcare and how community change can improve patient outcomes.”

*“I am very grateful for what Medic to Medic through different platforms has helped me become. The writing competitions have strongly contributed to what I am today and have become one of my strongest skills I have now.”*

## Medic to Medic Graduate

Certificate & Diploma Level	Degree Level
<b>1<sup>st</sup> Prize</b> Stanley Kalulu	<b>1<sup>st</sup> Prize</b> Teddy Nakabiri
<b>2<sup>nd</sup> Prize (Joint)</b> Peter Samuel & Richard Chitzanja	<b>2<sup>nd</sup> Prize</b> Alice Nyengo
<b>3<sup>rd</sup> Prize</b> Janet William	<b>3<sup>rd</sup> Prize (Joint)</b> Aubrey Matope & Hopeson Mataka
<b>Highly Commended</b> Bridget Mabangwe	<b>Highly Commended</b> Lemson Mussa

Thank you to Dr Hurst whose continued donations provide the prize money for this competition and to our markers – Robert Cummings, Isaac Yiwombe, Neil Merrylees and Elizabeth Howard



# Environmental Action

---



*Photo: Casten Chikumbutso Tree Planting Initiative*

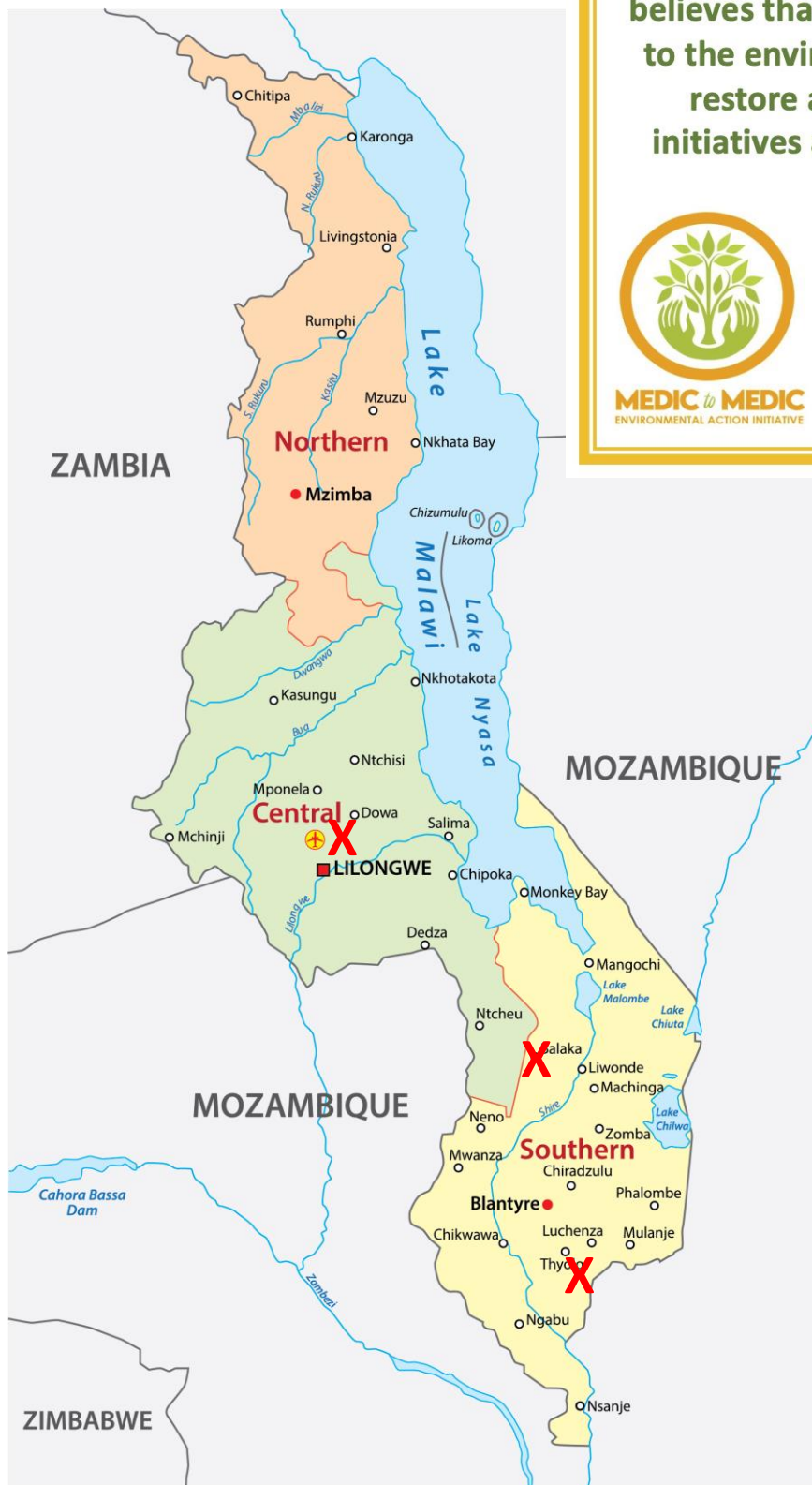
Climate change is having and will continue to have a detrimental impact on health outcomes for people globally, but more so in countries such as Malawi that are already vulnerable. As an international NGO, we feel we have a role to play in advocacy for the environment. People trust health workers because they stand against death and disease. Their knowledge and skills are trusted by the public who are reliant on them when they are needed most. As such, the public listen to health workers. They have a unique position in society for ensuring environmental integrity.

These circumstances have inspired our environmental action initiative. All our students are given the opportunity to apply for grants during the rainy season to conduct forestry projects in their communities. Trees provide shade, reduce soil erosion and prevent flooding as well as reducing carbon dioxide from the atmosphere. How students engage their communities is a key component of assessing student projects applications.

Projects enable us to work with our students on a shared initiative, with students developing leadership roles at a community level – ensuring that the forests are community owned. Students are required to write a short report, fill out an online survey at 6 months post planting and visit a fellow students' forest to learn from their experience and build friendships for the future.

During 2023-2024, 11 of our community applied for funding for environmental action grants. We supported 3 student projects and distributed 900,000 MK in grants. A total of 1200 trees were planted and 985 trees survived at 6 months (82% survival rate).

# Forest Map



## Mission Statement

Medic to Medic Environmental Action believes that health and well being is linked to the environment. We strive to protect, restore and enhance environmental initiatives at community level in Malawi.



**MEDIC to MEDIC**  
ENVIRONMENTAL ACTION INITIATIVE

This is a student led initiative by trainee health workers in the Medic to Medic community in Malawi.

*"Action is louder than plans."*

**Northern Region**  
No projects were completed in the northern region this year.

**Central Region**  
Casten Chikumbutso

**Southern Region**  
Lameck Kinnahson  
Takondwa Likumbo

**Total Trees Planted: 1200**  
**Total Trees Survived: 985**  
**(Survival Rate 82%)**



# Statement of Financial Activities UK

The next two pages show a statement of Medic to Medic's financial activities for the year 2023 – 2024. For more information please see our Financial report on our website or the UK charity commission:

<https://www.medictomedic.org.uk/charity-information>

## Medic to Medic

### Statement of financial activities

For the year ended 30 June 2024

	Note	Restricted £	Unrestricted £	2024 Total £	2023 Total £
<b>Income from:</b>					
Donations	3	21,953	83,163	105,116	117,320
Other trading activities	4	-	3,391	3,391	5,560
Investments		-	91	91	31
<b>Total income</b>		<u>21,953</u>	<u>86,645</u>	<u>108,598</u>	<u>122,911</u>
<b>Expenditure on:</b>					
Raising funds		-	6,763	6,763	5,182
Charitable activities		<u>29,169</u>	<u>63,161</u>	<u>92,330</u>	<u>119,656</u>
<b>Total expenditure</b>	6	<u>29,169</u>	<u>69,924</u>	<u>99,093</u>	<u>124,838</u>
<b>Net income / (expenditure)</b>		(7,216)	16,721	9,505	(1,927)
<b>Reconciliation of funds:</b>					
Total funds brought forward		<u>11,216</u>	<u>47,188</u>	<u>58,404</u>	<u>60,331</u>
<b>Total funds carried forward</b>		<u>4,000</u>	<u>63,909</u>	<u>67,909</u>	<u>58,404</u>

All of the above results are derived from continuing activities. There were no other recognised gains or losses other than those stated above. Movements in funds are disclosed in note 14 to the accounts.





# Balance sheet UK

## Medic to Medic

### Balance sheet

As at 30 June 2024

	Note	2024 £	2023 £
<b>Current assets</b>			
Debtors	11	3,711	5,534
Cash at bank and in hand		<u>66,238</u>	<u>54,730</u>
		<b>69,949</b>	60,264
<b>Liabilities</b>			
Creditors: amounts falling due within 1 year	12	<u>(2,040)</u>	<u>(1,860)</u>
<b>Net assets</b>	13	<u><b>67,909</b></u>	<u>58,404</u>
<b>Funds</b>	14		
Restricted funds		4,000	11,216
Unrestricted funds			
Designated funds		12,000	9,000
General funds		<u>51,909</u>	<u>38,188</u>
<b>Total charity funds</b>		<u><b>67,909</b></u>	<u>58,404</u>

Approved by the trustees on 30 November 2024 and signed on their behalf by

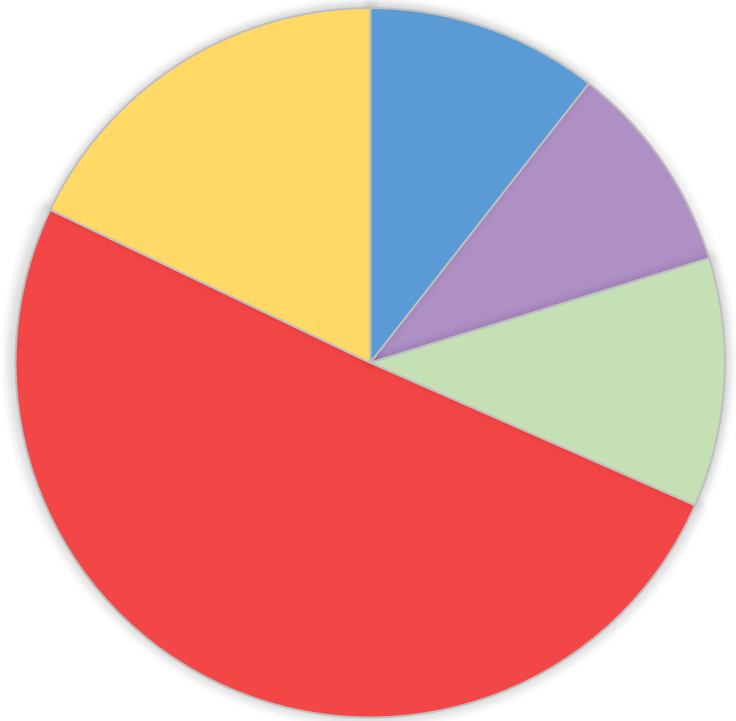
David Howells - Trustee



# Income 2023 – 2024 UK

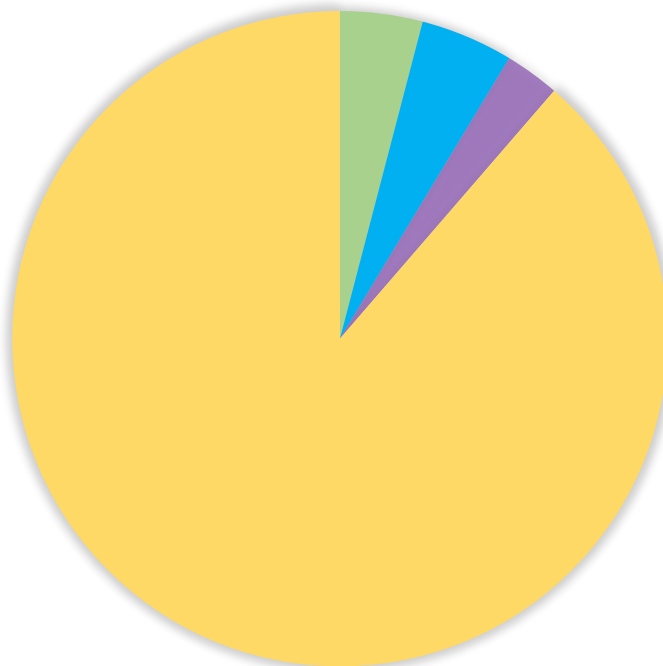
---

- 51% Regular Giving
- 18% Grant Income
- 11% Fundraising & Appeals
- 11% Gift Aid
- 10% Other Donations



# Expenditure 2023 – 2024 UK

---



- 89% Student Scholarships
- 5% Programme Coordination
- 4% Fundraising
- 3% Governance Costs





*“I urge Medic to Medic to persist in their continued commitment to support the less privileged students like myself. Your continued financial assistance not only alleviates financial challenges but it cultivates future healthcare leaders who are passionate and dedicated to making a difference in health sector.”*



*“Thank you for believing in me and providing me with the resources necessary to succeed. I am committed to making the most of this opportunity and making a positive impact in my community.”*

# Statement of Financial Activities NZ

## Medic to Medic Performance Report For the year ended 30 June 2024

### FINANCIAL INFORMATION Receipts and Payments

	Current year	Last year
<b>Operating receipts (money deposited into the bank account)</b>		
Donations and fundraising	45,862	11,215
Grants	2,488	-
Bank account interest	19	27
<b>Total receipts</b>	<b>48,369</b>	<b>11,242</b>
<b>Less operating payments (money withdrawn from you bank account)</b>		
Key activities (Service performance)	47,090	9,855
Fundraising costs	1,534	
Payment to employees	-	
Other operating and overhead costs	783	57
<b>Total payments</b>	<b>49,407</b>	<b>9,912</b>
Operating surplus/(deficit) for the year	- 1,038	1,330
Plus opening total of all bank accounts and cash on hand	4,465	3,135
<b>Closing total of all bank account balances and cash on hand</b>	<b>3,427</b>	<b>4,465</b>

NB: Currency NZ\$

During July 2023 – June 2024, NZ Medic to Medic paid for the following:

- **Tuition Fees:** 3 medical students in Uganda, 1 dental surgery student in Kenya.
- **Student Allowances:** A total of 7 students received a stipend for their living costs.
- **Elective Programme:** The profits from our elective programme have enabled us to support 1 additional Nurse Midwife Technician at Trinity College in Nsanje, Malawi and also enabled us train 29 graduate mentors to formalise our mentoring programme for our community and pay for the first 6 months in stipends for all students to have mentorship from their peers.
- **Elective Projects:** 300 female students have received period poverty kits on Likoma Island, 52 mosquito nets have been distribution at St Peters Hospital and Nanchidwa primary school in Ndala village Mulanje has had their school office rebuilt.
- **Charity operating costs:** website, dropbox, governance and elective administrative costs have been accounted for.

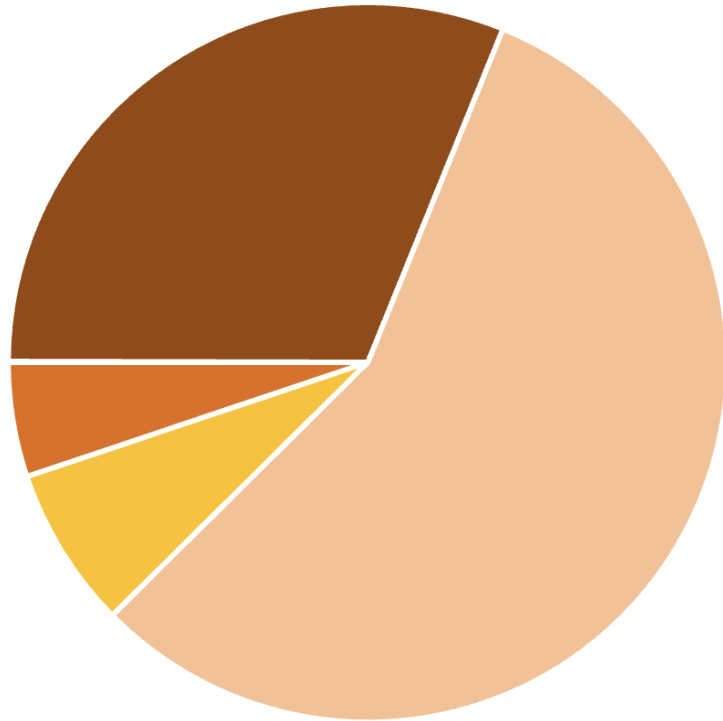




# Income 2023 – 2024 NZ

---

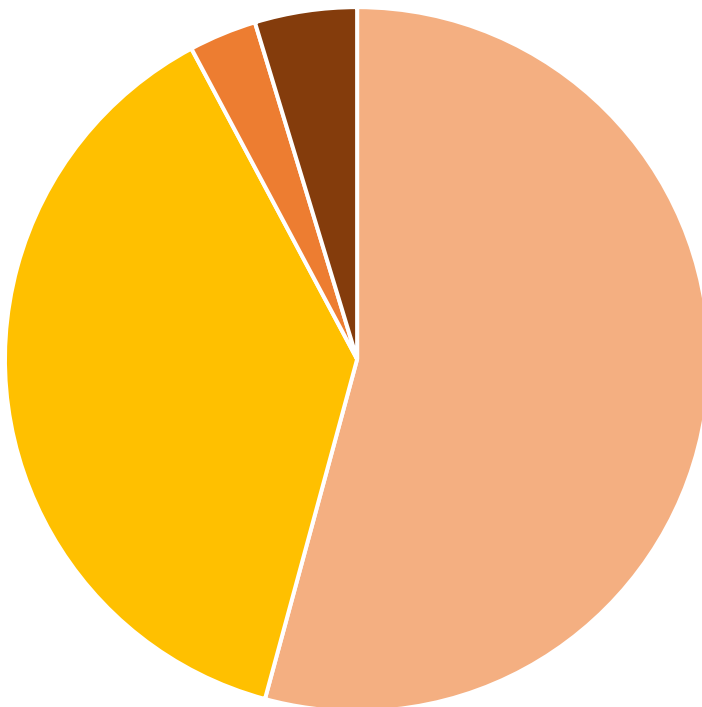
57% Elective  
31% Donations  
7% Fundraising  
5% Grants



# Expenditure 2023 – 2024 NZ

---

54% Elective  
38% Tuition Fees  
5% Operating costs  
3% Student allowances



# Administrative Details

## Medic to Medic

c/o Rosanne, 7 Shortway, Amersham, HP6 6AQ. UK.

c/o 112 Otonga Road, Rotorua, 3015. NZ.

Email: [info@medictomedic.org.uk](mailto:info@medictomedic.org.uk)

For comments, questions and errata regarding this annual report, please contact the editor at the email address above. Every effort has been made to credit contributors to this report. Where omissions have occurred, please advise and they will be rectified at the earliest possible opportunity.



Medic to Medic



@MedictoMedic



Medic to Medic



tamsinlillie



Registered with



FUNDRAISING  
REGULATOR

## How you can help

Most of our donors give just £5—20 (NZ\$10 – 40) per month. If you feel you can sponsor a student, please visit [www.medictomedic.org.uk](http://www.medictomedic.org.uk) to set up a direct debit online. You will be linked with an individual student and receive regular updates from them on their progress. You are welcome to enter into email correspondence with them and many of our students find this very motivating. Please note that although you will be allocated a particular student, our donations are pooled so that no student is disadvantaged if a donor withdraws. For more information, please contact us (details above).

**Medic to Medic Bankers** Lloyds TSB Bank PLC; 286-288 Station Road; Harrow; Middlesex; HA1 2EB

**Independent Examiners:** Godfrey Wilson Limited; Chartered accountants and statutory auditors; 5th Floor Mariner House, 62 Prince Street, Bristol, BS1 4QD.

UK registered charity No: 1149904 NZ registered charity No. CC58085  
Malawi registered charity C1609/2022





Medic to Medic was founded in 2007 to address the problems of training and retaining health workers in some of the world's poorest countries. Like many sub-Saharan countries, Malawi is desperately short of doctors with just two doctors per 100 000 people.

We support resource-limited but dedicated students through their training, supporting the sustainability of the health systems in their home countries. We cover tuition fees, allowances, medical equipment, books and a laptop so that students have everything they need to reach their full potential.



**Medic to Medic**

